

Logo Placement

Crew Uniform



Size Requirements

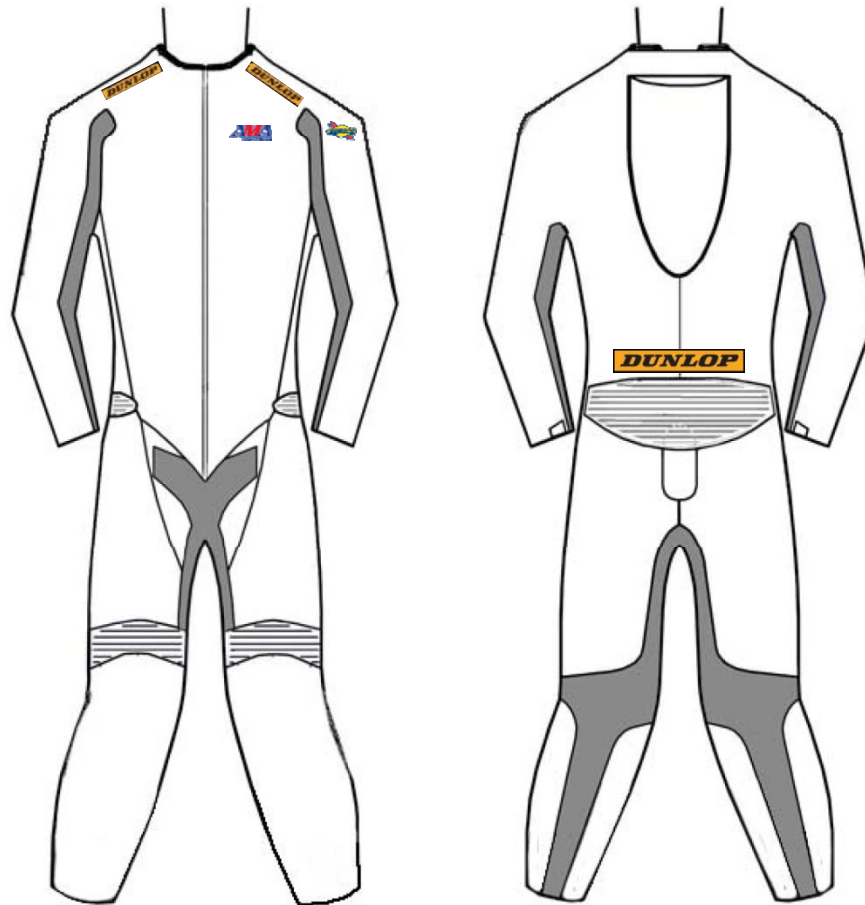
Dunlop: 4.875" x .875" on Right and Left Collarbone (2)

Sunoco: 4.5" x 1.75" excluding arrow dimensions on Left Sleeve

AMA Pro Racing: 2.875" x 1.25" on Left Chest below Dunlop

Logo Placement

Rider Leathers



Size Requirements

Dunlop: 4.875" x .875" on Right and Left Collarbone (2)
10" x 1" on Middle lower back

Sunoco: 4.5" x 1.75" excluding arrow dimensions on Left Sleeve

AMA Pro Racing: 2.875" x 1.25" on Left Chest below Dunlop

Logo Placement

Motorcycle



Size Requirements

Dunlop: 12" x 1.25" Lower Fairing, each side (2)
5" x 1" Front Fender Legs (2)

Sunoco: 3" x 2.5" (6.25 sq. in) Lower Fairing, Leading edge each side, above Dunlop (2)

AMA Pro Racing: 3.25" x 1.5" Lower Fairing, Leading edge each side, above Dunlop behind Sunoco (2)

Contingency decals limited to 4 square inches, behind the Dunlop logo on lower fairing

Logo Placement

American SuperBike Number Plate



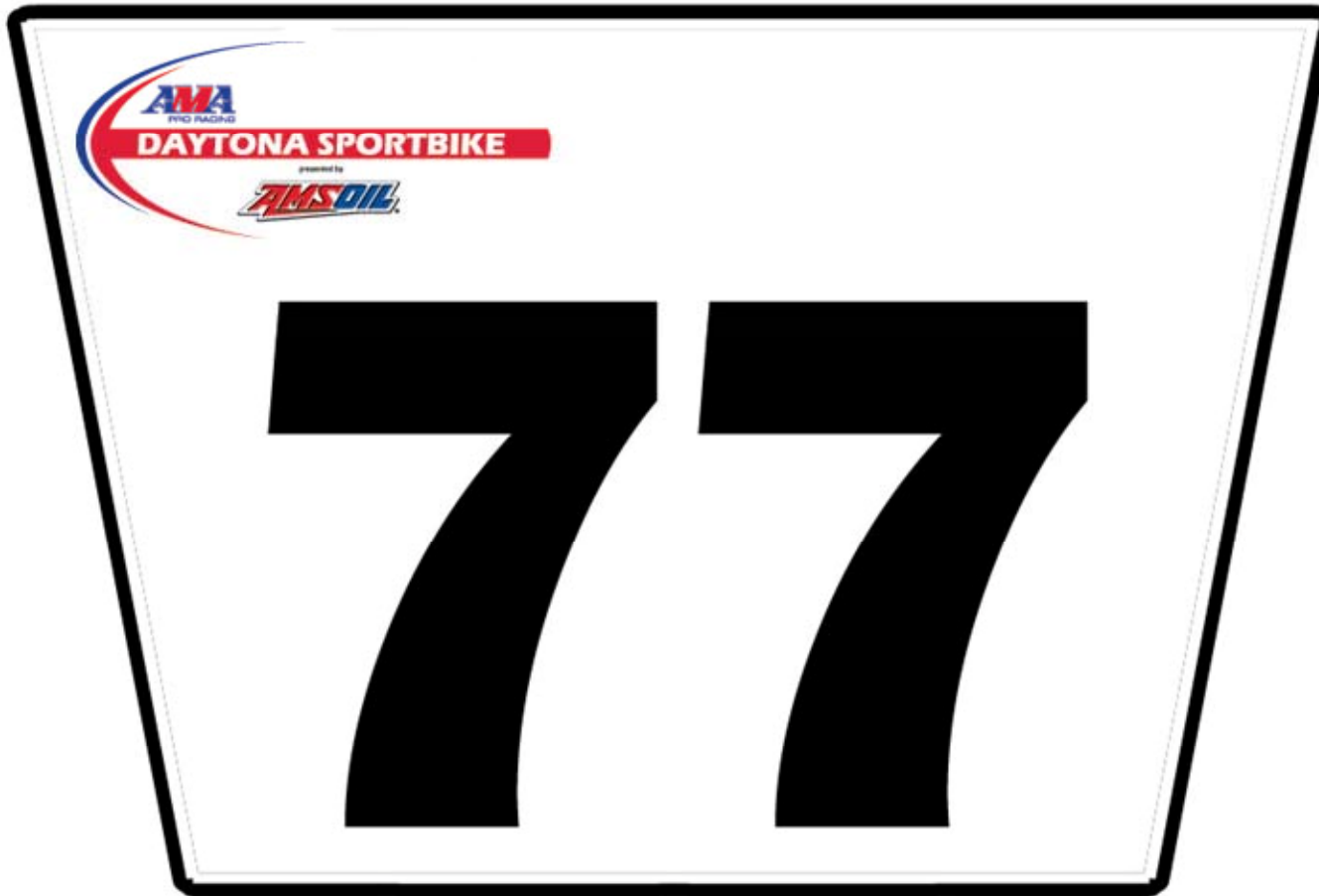
77

Size Requirements

AMA Pro Road Racing Class Decal: 4" x 1.75" Within 1" of the top-left corner of first number

Logo Placement

Daytona SportBike & SuperSport Number Plate



Size Requirements

AMA Pro Road Racing Class Decal: 4" x 1.75" Top left corner of number plate