

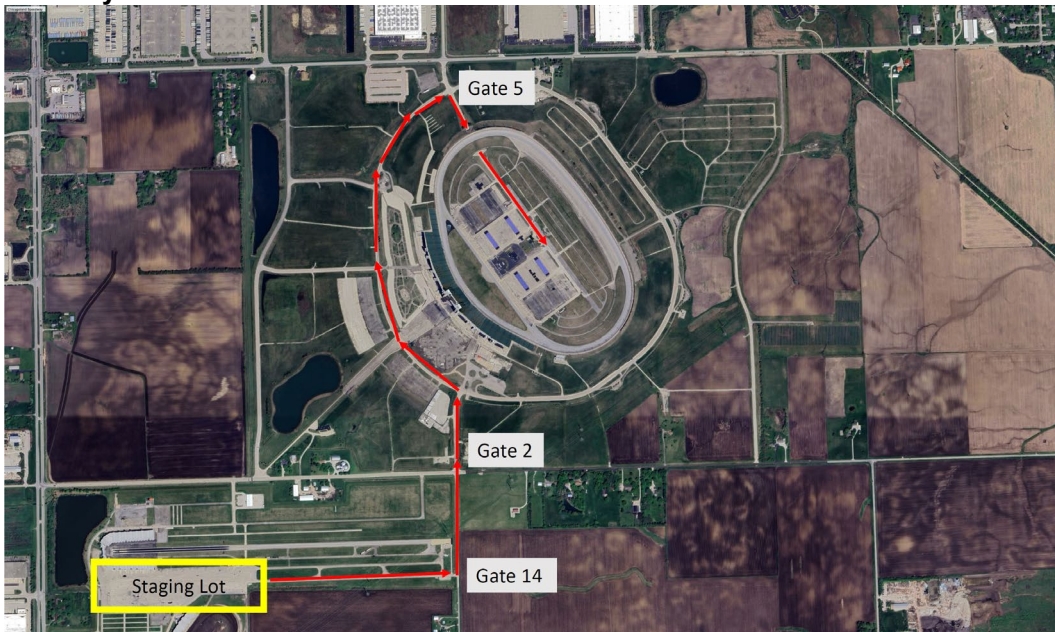


## SMX Competitor Bulletin # 2023-02

**To:** SuperMotocross World Championship Competitors  
**Date:** 9/12/2023  
**Subject:** SMX Playoff 2 – Chicagoland Parking

### General Notes:

- Each garage has power.
- To access the Staging Lot, go to Gate 12 (Shipping and Receiving) and call the number on the fence.
- If you are coming from the Staging Lot to the paddock, please follow the map below and [linked here](#), otherwise proceed directly to Gate 5 (Infield Tunnel).
- The Auto Gate hours for Friday & Saturday prior to Fan Fest opening are listed below. All personal vehicles must be out of the paddock by end of this window as well:
  - **Friday:** 8am - 10am
  - **Saturday:** 8am - 10:30am



### Chicagoland Parking Order

**Wednesday:** Sponsor Parking after 10am

**Thursday:**

8:00AM

- Honda HRC (x2)
- Phoenix Honda
- Firepower Honda
- Factory GasGas
- Rocky Mountain KTM
- Factory Husqvarna (x2)
- AEO KTM
- Red Bull KTM (x2)

8:30AM

- Star Yamaha (x3)
- Muc-Off FXR ClubMX Yamaha
- Rock River Yamaha
- Bar X Suzuki
- HEP Motorsports
- Factory Kawasaki
- Pro Circuit Kawasaki

If your Team isn't on this list, you may park Thursday any time after 9am. All approved motorhomes will be parked at 9am. If parking runs ahead of schedule and the next set of teams are ready, you may be parked at that time.

Please be ready to park at your scheduled times. If any problems arise, please call Jarod Betts ASAP at 919-827-3090.